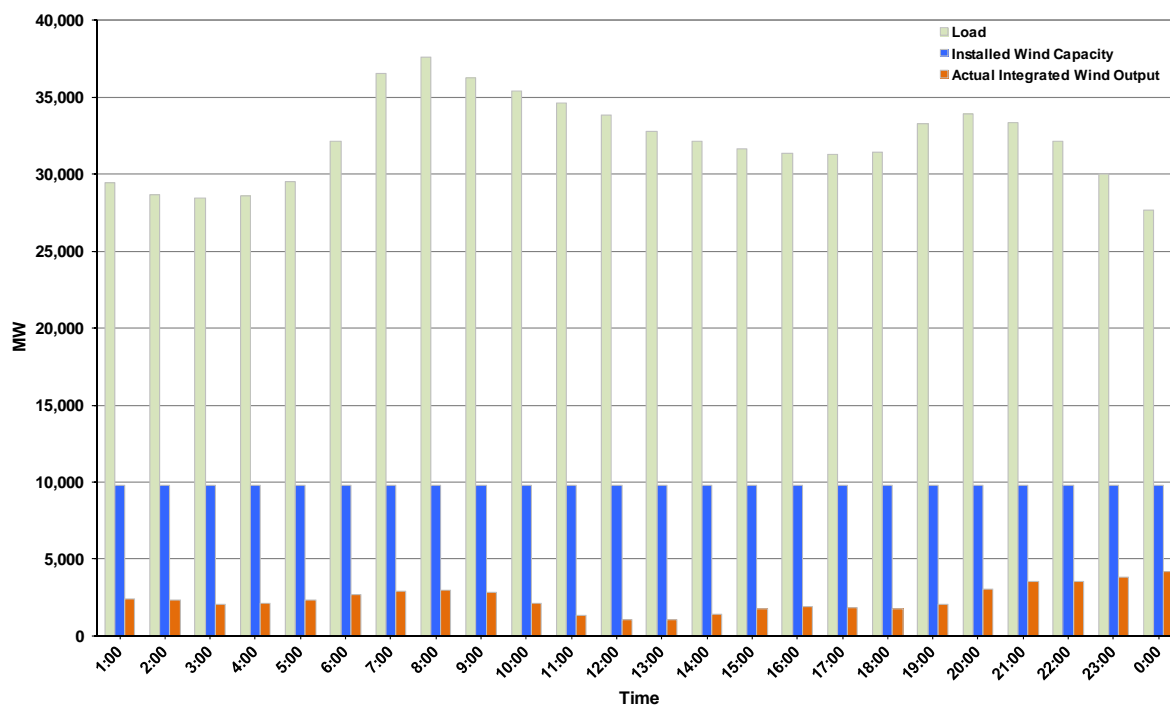




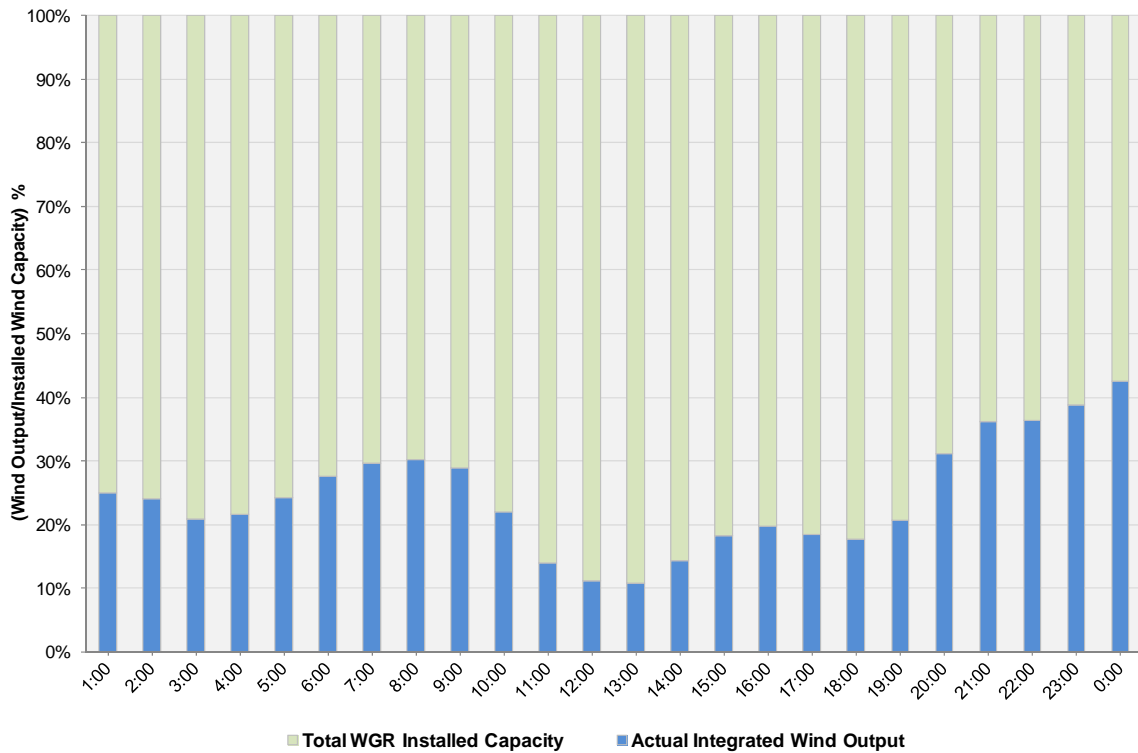
## ERCOT Grid Operations Wind Integration Report: 02/14/12

Peak Load	37,569 MW
Load Peak Hour (HE)	08
Wind over Peak	2,966 MW
Wind Record 10/07/11	7,400 MW
Max Wind Value	4,346 MW
Wind Peak Time	22:56
Wind Integration %	15.02%

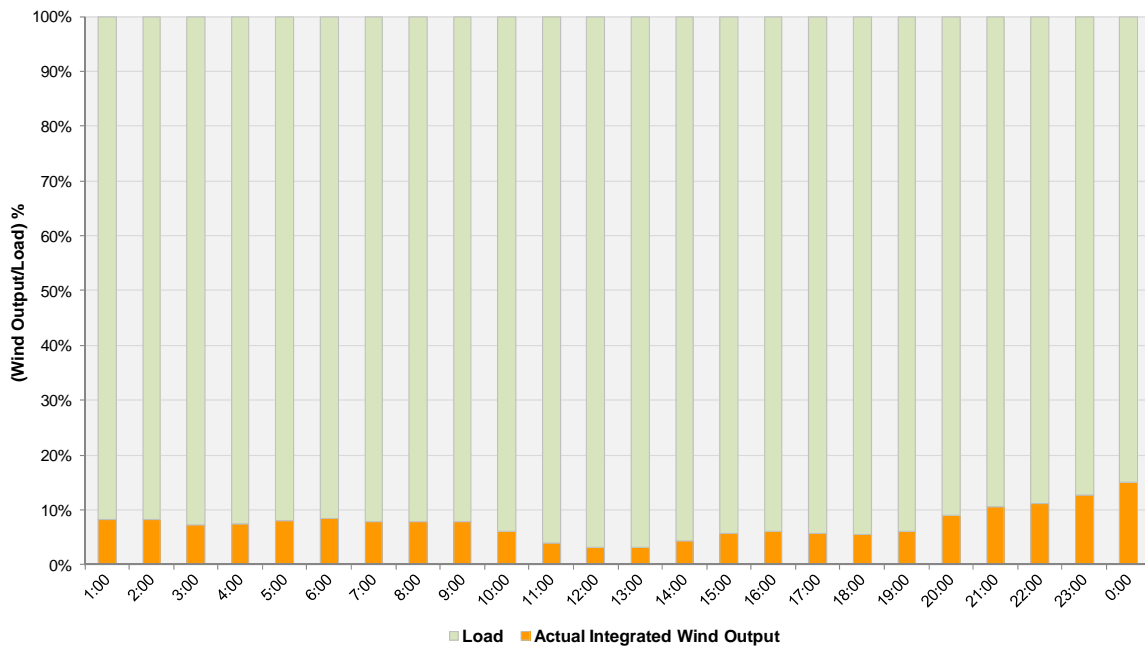
**Hourly Average Actual Load vs. Actual Wind Output  
02-14-2012**



**Actual Wind Output as a Percentage of the Total Installed Wind Capacity**  
**02-14-2012**



**Actual Wind Output as a Percentage of the ERCOT Load**  
**02-14-2012**



ERCOT Load vs. Actual Wind Output 2/7/2012 - 2/14/2012

